



Track: Vineyard / Grower
 11:00am - 12:00pm

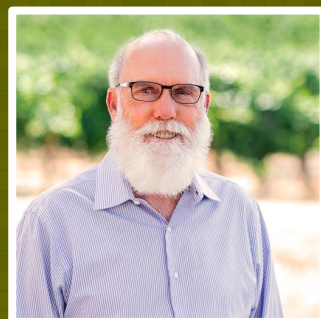
Conference Track
 Presented by:



MODERATOR



Karissa Kruse
 President /
 Sonoma County
 Winegrowers



Duff Bevill
 Founder & Partner /
 Bevill Vineyard
 Management



Lindsey Ponce
 Senior Territory
 Sales Manager-
 Vines / Fieldin



Carter Collins
 General Manager, Director of
 Vineyards / Viticultural
 Management, Inc., Vina
 Robles Vineyards & Winery



Greg Gonzalez
 Director of Central
 Coast Farming / Foley
 Family Farms

Newsweek

Robots Replace Workers in Vineyards as Wineries Struggle with Labor Shortages

The New York Times
In Sonoma County 'Regenerative Ag' is the Next Big Thing

Forbes

How Sonoma County Winegrowers Collaborated With Ford Pro Towards Creating The Sustainable "Farm Of The Future"

ADVISOR
WINE INDUSTRY NETWORK

Vineyard Tech & The Green Cyber Revolution

HUFFPOST

How Technology Is Transforming the Wine Industry

OCBS NEWS

Effects of climate change taking root in the wine industry

San Francisco Chronicle

Climate change is transforming California. Severe drought, record-breaking wildfires, erratic weather patterns: Climate change is a defining force of life in California today.

NORTH BAY
biz
NAPA · MARIN · SONOMA

On the Road to Change
Ford Pro and Sonoma County Winegrape Growers partner together to reduce greenhouse gases

A Farming Program for the Future

In 2022, SCW Announced its Vision for Preserving Long Term Agriculture - The FARM OF THE FUTURE



- Commitment to sustainability is foundation for farming in Sonoma County
- Every farming season is different, yet sustainability/climate programs do not offer flexibility
- Ford Pro partnership and “electrification” has created an innovative path for us to think about collaboration and partners in sustainability





Adaptation Mitigation Net Zero

F **A** **R** **M** **I** **N** **G**

Flexible Resource Conservation Innovation Generational

For the Future



Aug 23 22' 18:00

Aug 24 22' 18:00

Reload

Weed Spraying

Spraying

Weeding

History

Live

Map Mode



SPRAYING	IMPLEMENT	AVG. WORKING SPEED	AVG. PACE	COVERAGE	WORKING EFFICIENCY	WORKING HOURS
2 Sprayers	2 Implements	3.33 Mph	1.81 Acres/Hour	29 Acres	54 %	16:13
TR 6	N/A	3.22 Mph	1.59 Acres/Hour	12.9 Acres	50 %	8:08 Hours
TR 9	F05	3.42 Mph	1.99 Acres/Hour	16.1 Acres	58 %	8:05 Hours

Activity Aug 23 6:00 PM - Aug 24 6:00 PM

Blocks Rigs Exceptions

All Sprayers (2)

AVG WORKING SPEED	TOTAL AC.
3.3 Mph	29.0 Ac.

TR 6

AVG WORKING SPEED	TOTAL AC.
3.2 Mph	12.9 Ac.

TR 9

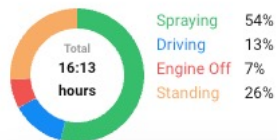
AVG WORKING SPEED	TOTAL AC.
3.4 Mph	16.1 Ac.

Histogram Efficiency

Efficiency | First tree to last tree

Legend

Total



TR 9



TR 6





Viticultural Management Inc

Block 3E-Huerhuero Vineyard

Planting year 1999
 Crop Vineyard
 Cultivar Cabernet Sauvignon
 Row gap 8 feet
 Block size 7.1 Ac.

Spraying

Recommendation #7574794 | Aug 21 22'

Moria Ayash

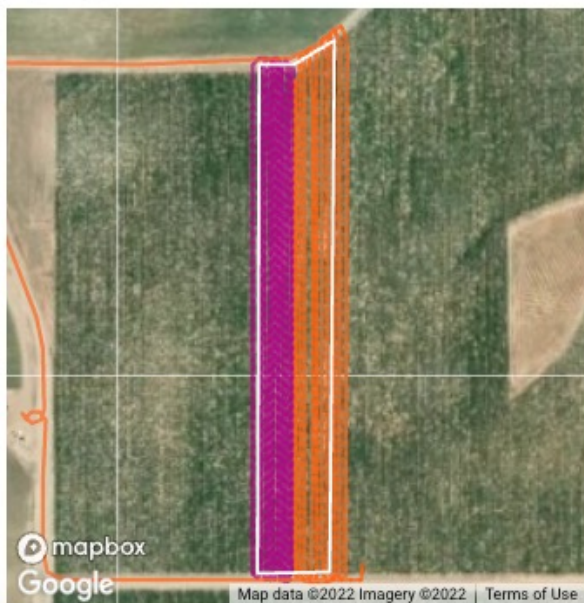
Due date **Aug 20 22' - Aug 20 23'**

Drive speed 3.5 Mph
 Volume 75 Gallons/Ac.
 Sprayers
 Cultivar Cabernet Sauvignon
 Target Of Spraying

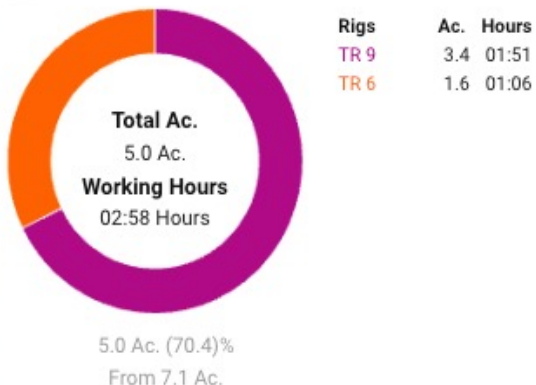
Products
 Keep 0-52-34 3 pound / acre
 Belay 2.61 fluid oz / acre
 Delegate Wg 5 oz/acre
 Freeway (34704-50031) 6 fluid oz / acre

Application

Aug 24 22', 12:45-03:13



Total Spraying area (Ac.)



Total Tractors **2**

Shifts

Aug 24 22', 12:45-03:13

Weather station FIELDIN-VWS-134537

2 Tractors	5 Ac. 70.4% Spraying Area	3.4 Mph Average Spraying Speed	2:58 Working Hours	1.2 - 3.1 Mph Wind Speed	59% - 71% Humidity	60.8°F - 68°F Temperature
------------	---------------------------	--------------------------------	--------------------	--------------------------	--------------------	---------------------------

Shift Aug 24 22', 12:45-03:13

Average Spraying speed (Mph)



TR 9

Working hours 00:45 - 02:06

3.4 Ac. 47.7% Spraying Area	3.5 Mph Average Spraying Speed	1.8 Ac. / Hour
-----------------------------	--------------------------------	----------------

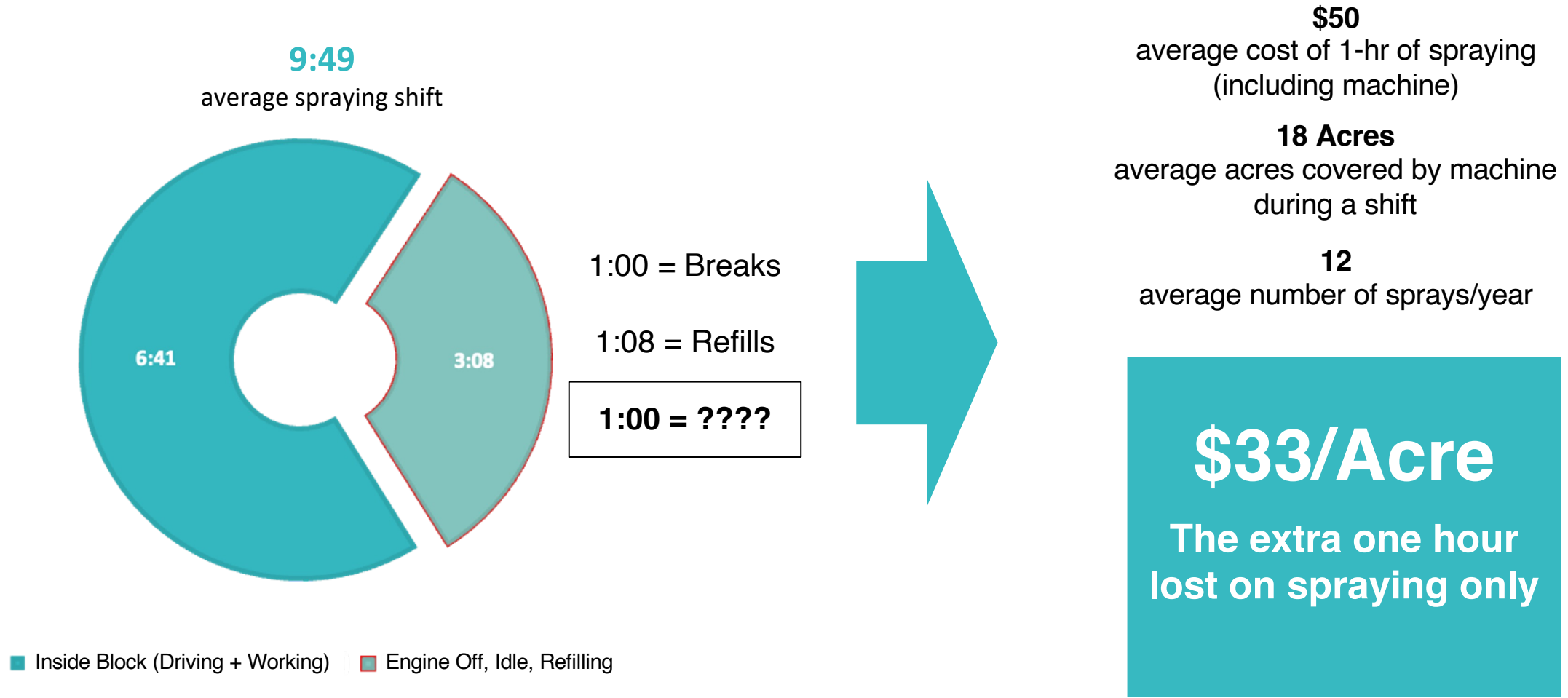
TR 6

Working hours 01:46 - 03:13

1.6 Ac. 22.7% Spraying Area	3.3 Mph Average Spraying Speed	1.5 Ac. / Hour
-----------------------------	--------------------------------	----------------

Getting the most out of every hour across your operations

Surfacing key insights to improve your bottom line



Averages based on aggregated results
from **27,000+ acres of vineyards**

The journey to autonomy starts today

Retrofit current machinery with LiDAR sensors

Increase machine utilization up to 80%

Reduce operator costs up to 75%

Regain confidence amid labor shortages



Thank You to Our Sponsors!

Presenting Sponsor  **EMS USA**
efficiency moves success

Silver Sponsors

 **CMRP**
CARLE, MACKIE, POWER & ROSS, ATTORNEYS

 wine
compliance
WWW.DHWINCOMPLIANCE.COM

 MIRA COMMERCE
DIGITAL AGENCY



Additional Sponsors

 365 WINETRADE
by Western Computer

 American
AgCredit

 atp group

 BPM

 BSG

 EUROSTAMPA

 Fermentis
by Lesaffre

 GO
fermentor

 NORTH BAY
biz
NAPA - MARYSVILLE - SONOMA

 red chirp

 Sonoma Sterling
Limousines, Inc.

 WECCO
A DURAVANT COMPANY

 THE BELL CORPORATION
WESTEC
TANK & EQUIPMENT CO.

cloverdale  arts alliance

 SANTA ROSA
JUNIOR COLLEGE

 SONOMA STATE
UNIVERSITY



 WINE INDUSTRY
JOBS